

0170/0171

Diaphragm/piston pressure switches 42 V

Zinc-plated steel body, with push-on terminals
 With changeover switch and silver contacts
 Overpressure safe to 100/300/600 bar¹⁾
 Adjustable hysteresis at works



0170 Diaphragm pressure switches with push-on terminals

Adjustment range in bar	Tolerance in bar (at room temperature)	Thread	Order number	p _{max.} in bar
0.3 – 1.5	± 0.2	M 10x1 taper	0170 457 01 001	100 ¹⁾
		M 12x1.5	0170 457 02 002	
		G 1/4	0170 457 03 003	
1 – 10	± 0.5	M 10x1 taper	0170 458 01 004	
		M 12x1.5	0170 458 02 005	
		G 1/4	0170 458 03 006	
1 – 10	± 0.5	M 10x1 taper	0170 458 01 040	300 ¹⁾
		M 12x1.5	0170 458 02 041	
		G 1/4	0170 458 03 042	
10 – 50	± 3.0	M 10x1 taper	0170 459 01 007	
		M 12x1.5	0170 459 02 008	
		G 1/4	0170 459 03 009	
10 – 100	± 3.0 – 5.0	M 10x1 taper	0170 461 01 010	
		M 12x1.5	0170 461 02 011	
		G 1/4	0170 461 03 012	

0171 Piston pressure switches with push-on terminals

Adjustment range in bar	Tolerance in bar (at room temperature)	Thread	Order number	p _{max.} in bar
50 – 200	± 5.0	M 10x1 taper	0171 460 01 001	600 ¹⁾
		M 12x1.5	0171 460 02 002	
		G 1/4	0171 460 03 003	

! Order number
 Add figure for diaphragm/seal material

017X XXX XX X XXX

NBR	Hydraulic / machine oil, turpentine, heating oil, air etc.	=	1
EPDM	Hydrogen, acetylene, ozone, brake fluid etc.	=	2
FKM	Hydraulic fluids (HFA, HFB, HFC, HFD), petrol/gasoline etc.	=	3
See page 23 for temperature ranges of diaphragm/seal materials			

Warning!

When using with oxygen, the relevant accident-prevention regulations must be observed. In addition, we recommend that a maximum operating pressure of 10 bar is not exceeded.

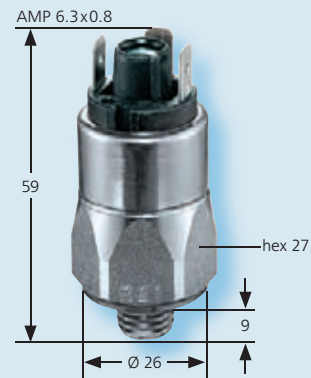
Piston-type pressure switches are only to a limited extent suitable for use with gases and oxygen. See explanation on page 5.

¹⁾ Static pressure, dynamic pressures should be 30 to 50% lower. These values refer to the hydraulic or pneumatic part of the pressure switch.

Degree of protection IP65

The type approval does not apply without restriction to all environmental conditions. It is the responsibility of the user to check whether the connection complies with regulations other than those stated, and whether it can be used for special applications which could not be foreseen by us in advance.

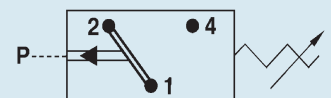
With external thread



- Also available with switching point preset in our works.
- For ready-wired variants, see page 34 onwards.
- Other body materials and connection threads on request.
- Other diaphragm / seal materials on request, e.g. HNBR, silicone (last one for diaphragm type only).



- Accessories: see page 33



- For further technical data, see page 23.