

Diaphragm/piston pressure switches 250 V

Aluminium body
 With changeover switch and silver contacts
 Overpressure safe to 200/600 bar ¹⁾
 Max. voltage 250 V

- See page 7 for electrical properties

- Switching point steplessly adjustable with switch in operating condition by turning knurled knob

0159 Diaphragm pressure switches

Adjustment range in bar	Tolerance in bar (room temperature)	p _{max.} in bar	Thread	Order number
0.2 – 2	± 0.2 – 0.3	200 ¹⁾	G 1/4 internal	0159 426 14 001
0.5 – 5	± 0.2 – 0.5			0159 427 14 001
1 – 10	± 0.5			0159 428 14 001
2 – 20	± 1.0			0159 429 14 001
5 – 50	± 3.0			0159 430 14 001
10 – 100	± 3.0 – 5.0			0159 431 14 001

0159 Piston pressure switches

Adjustment range in bar	Tolerance in bar (room temperature)	p _{max.} in bar	Thread	Order number
10 – 100	± 3.0 – 5.0	600 ¹⁾	G 1/4 internal	0159 432 14 001
25 – 250	± 5.0 – 7.0			0159 433 14 001
40 – 400	± 5.0 – 9.0			0159 434 14 001

! Order number
 Add figure for diaphragm/seal material

0159 XXX XX **X** XXX

NBR	Hydraulic / machine oil, turpentine, heating oil, air etc.	=	1
EPDM	Hydrogen, acetylene, ozone, brake fluid etc.	=	2
FKM	Hydraulic fluids (HFA, HFB, HFC, HFD), petrol/gasoline etc.	=	3
See page 38 for temperature ranges of diaphragm / seal materials			

Warning!

When using with oxygen, the relevant accident-prevention regulations must be observed. In addition, we recommend that a maximum operating pressure of 10 bar is not exceeded.

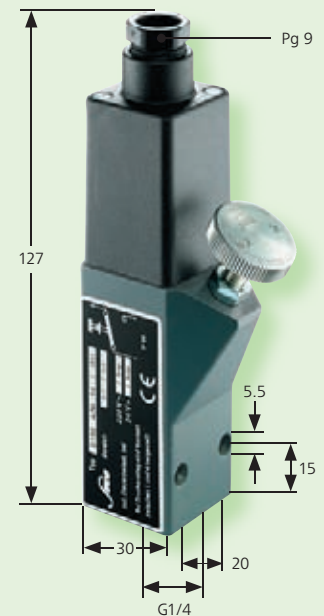
Piston-type pressure switches are only to a limited extent suitable for use with gases and oxygen. See explanation on page 5.

¹⁾ Static pressure, dynamic pressures should be 30 to 50% lower. These values refer to the hydraulic or pneumatic part of the pressure switch.

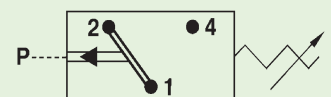
Degree of protection IP65

The type approval does not apply without restriction to all environmental conditions. It is the responsibility of the user to check whether the connection complies with regulations other than those stated, and whether it can be used for special applications which could not be foreseen by us in advance.

With internal thread



- Also available with switching point preset in our works.



- For further technical data see page 38